



*Artist Rendering - Elevation 2.
Actual details may vary and show optional features.*

MADISON MODEL

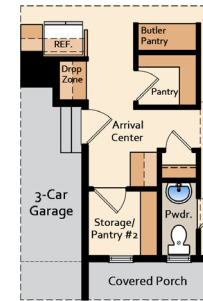




ELEVATION 1

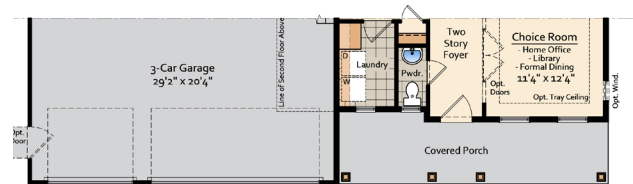


ELEVATION 3

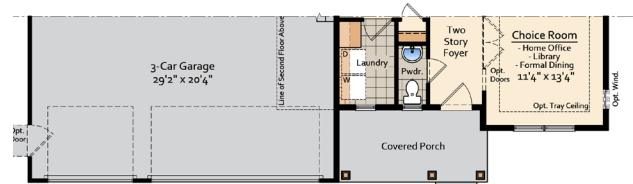


OPT. FIRST FLOOR LAUNDRY
IN LIEU OF SECOND FLOOR LAUNDRY
Brochure

FIRST FLOOR PLAN
ELEVATION #1
Brochure

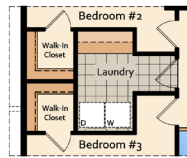


PARTIAL - FIRST FLOOR PLAN
ELEVATION #2
Brochure

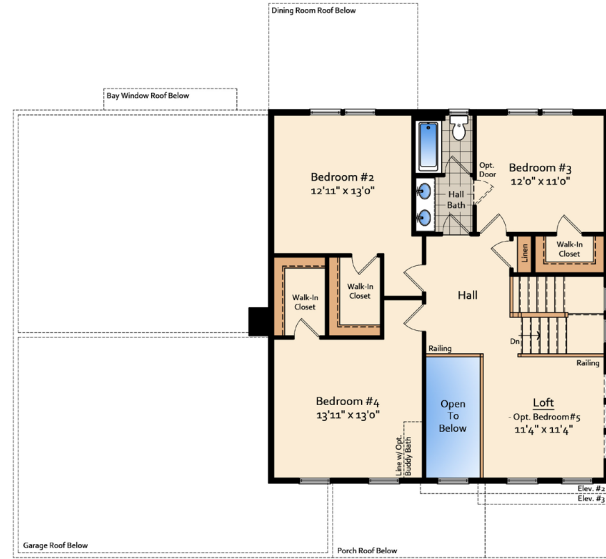


PARTIAL - FIRST FLOOR PLAN
ELEVATION #3
Brochure

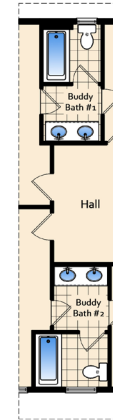
1ST FLOOR PLAN



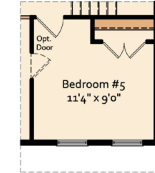
OPT_SECOND LAUNDRY
PARTIAL PLAN
Brochure



SECOND FLOOR PLAN
ELEVATION #1
Brochure



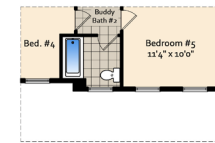
OPT_BUDDY BATH
PARTIAL PLAN
Brochure



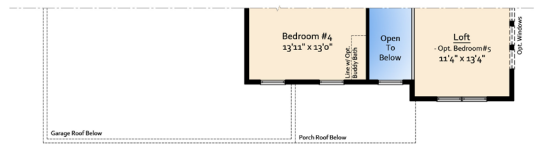
OPT_BEDROOM #5
PARTIAL PLAN
Brochure



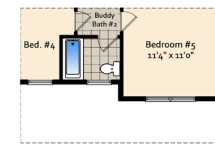
PARTIAL - SECOND FLOOR PLAN
ELEVATION #2
Brochure



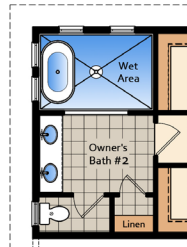
OPT_BEDROOM #5
PARTIAL PLAN
Brochure



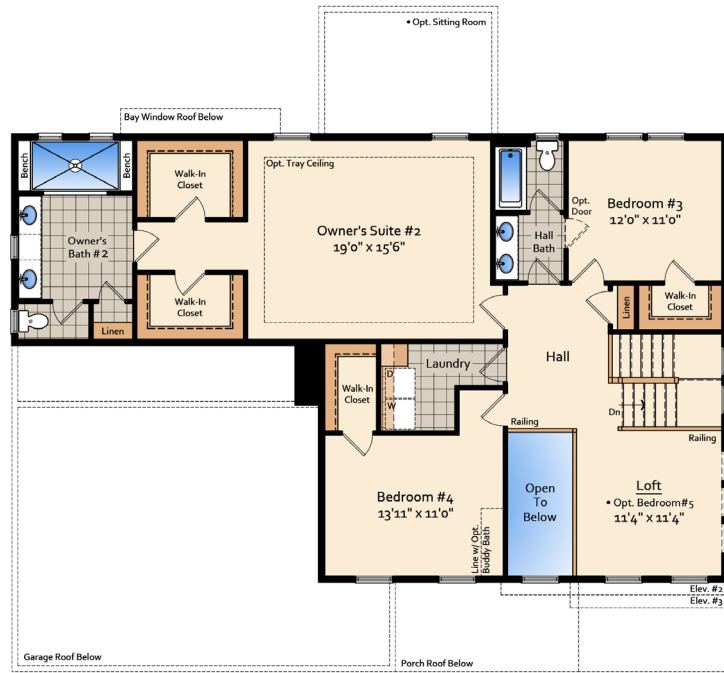
PARTIAL - SECOND FLOOR PLAN
ELEVATION #3
Brochure



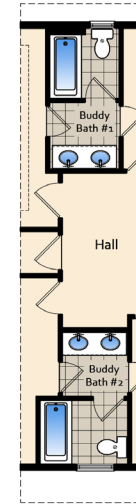
OPT_BEDROOM #5
PARTIAL PLAN
Brochure



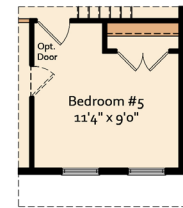
OPT. DELUXE TUB BATH
PARTIAL PLAN
Brochure



ALT. SECOND FLOOR PLAN
ELEVATION #1
Brochure



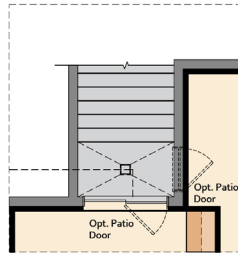
OPT. BUDDY BATH
PARTIAL PLAN
Brochure



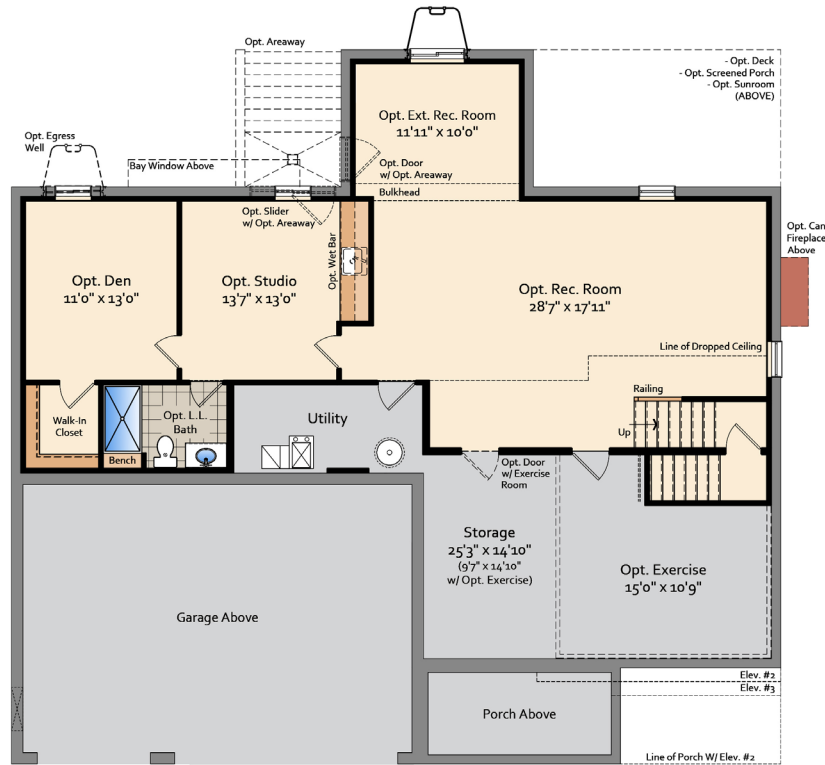
OPT. BEDROOM #5
PARTIAL PLAN
Brochure

© 2024 Schaefer Homes. All rights reserved. This document is for informational purposes only. It is not intended to be used as a contract. Please consult your sales representative for more information.

ALTERNATE 2ND FLOOR PLAN



OPT. AREAWAY
PARTIAL PLAN
Brochure



OPT. FINISHED LOWER LEVEL PLAN
ELEVATION #1
Brochure

LOWER LEVEL PLAN

CONSTRUCTION FEATURES

- Poured concrete foundation
- Interior and Exterior Drain Tile System
- Engineered OSB Roof, Subfloor & Wall Sheathing
- 30 Year Architectural Shingles, Certain Teed
- Ice and water shield in eaves, valley & low-sloped areas of roof
- CPVC Water Supply Lines

INTERIOR FEATURES

- 9' Ceilings on the First Floor
- Solid Oak Railings
- LVP Throughout First Floor
- Quality Wall-to-Wall Carpeting
- Washer & Dryer Hook-ups with Outside Vent
- Front Door Bell Chimes
- Hard Wire Smoke Detectors
- 1 Location Phone Pre-Wire
- 6' Exterior Slider Door
- Colonial-style trim package

KITCHEN & BATH FEATURES

- Stainless Steel Appliances
- Granite Kitchen Countertops
- 42" Designer Kitchen & Bath Cabinets
- Craftsman-style luxury cabinets with soft close kitchen drawers
- Stainless Steel Extra Large Sink
- Side by Side Frost Free Refrigerator with Icemaker
- 30" Self-Cleaning Electric Smooth-top Range
- Four Cycle Clean Design Dishwasher
- Garbage Disposal (plan specific)
- Bathroom Cultured Marble Countertops
- Decorative Mirror & Light Fixture
- Owner's suite fully tiled, over-sized shower
- Ceramic floor in upper level laundry (plan specific) and bath

ENERGY CONSCIOUS FEATURES

- Energy Efficient 15 SEER Heat Pump with Air Conditioning
- 50 Gallon Electric Hot Water Heater
- Air Infiltration Membrane at the top of all Foundation Walls
- Attic Insulation=R-49 (per code)
- Exterior Walls Insulation=R-20 (per code)
- Basement Space Walls Insulation =R-11 (per code)
- Overhangs Insulation = R-30 (per code)
- Garage Ceilings Insulation = R-30 (per code)
- Windows, Door Stoops, Bottom Exterior Plates, Wire,
- Pipe Mechanical Holes are all caulked or foamed with Insulation
- Insulated Fiberglass Exterior Front Door with Weather Stripping
- Efficient Attic Ventilation
- 2"x6" Exterior Walls
- Energy Efficient Bulbs
- HVAC will have Programmable Thermostats

EXTERIOR FEATURES

- Maintenance Free Vinyl Dutch Lap Siding
- Maintenance Free Soffits & Fascia
- Seeded Lawns
- 36" Poured Concrete Sidewalk
- Asphalt Driveway
- Decorative Lighting
- Seamless Gutters and Downspouts
- Decorative Features above Front Elevation Windows (plan specific)
- Two Hose Bibs & Two Exterior Electrical Outlets
- Garage Door with Keyless Entry and remote opener
- Craftsman-style elevation

STANDARD FEATURES